

ID	Task Name	Duration	Start	Finish	Predecessors	Aug 28, '11 8/28	Sep 4, '11 9/4	Sep 11, '11 9/11	Sep 18, '11 9/18	Sep 25, '11 9/25	Oct 2, '11 10/2	Oct 9, '11 10/9	Oct 16, '11 10/16	Oct 23, '11 10/23	Oct 30, '11 10/30	Nov 6, '11 11/6	Nov 13, '11 11/13	Nov 20, '11 11/20	Nov 27, '11 11/27	Dec 4, '11 12/4	Dec 11, '11 12/11	Dec 18, '11 12/18
1	Notice to Proceed	0 days	Tue 9/6/11	Tue 9/6/11			◆ 9/6															
2	Mobilization	2 days	Mon 9/26/11	Tue 9/27/11																		
3	Railings	159.5 days	Wed 9/21/11	Wed 5/2/12																		
4	Contract Award Date	0 days	Wed 9/21/11	Wed 9/21/11					◆ 9/21													
5	Shop Drawing Review/Approval	22.31 days	Wed 12/7/11	Fri 1/6/12																		
6	Mock Up Review/ Approval	22.31 days	Wed 12/7/11	Fri 1/6/12																		
7	6" Die Fabrication for Top Cap	11 wks	Mon 12/5/11	Thu 2/16/12																		
8	Fabrication Phase 1 Inner Rails	4.04 wks	Tue 1/10/12	Mon 2/6/12	6FS+2 days																	
9	Fabrication Phase 2 Inner Rails	2 wks	Thu 1/26/12	Wed 2/8/12																		
10	Fabrication Phase 3 Inner Rails	2 wks	Mon 4/2/12	Fri 4/20/12																		
11	Fabrication Phase 3 Outer Rails	2 wks	Mon 4/2/12	Fri 4/20/12																		
12	Fabrication Phase 2 Outer Rails	2 wks	Thu 1/26/12	Wed 2/8/12																		
13	Fabrication Phase 1 Outer Rails	4.04 wks	Fri 12/16/11	Mon 1/16/12																		
14	Install Custom Die Cap PH 1	3 days	Thu 2/16/12	Tue 2/21/12	7																	
15	Install Custom Die Cap PH 2	3 days	Wed 2/15/12	Mon 2/20/12	26																	
16	Install Custom Die Cap PH 3	3 days	Fri 4/27/12	Wed 5/2/12	31																	
17	Corridors	159.38 days?	Mon 9/26/11	Fri 5/4/12																		
18	Phase 1 Inner (Unit 09-12)	93.75 days?	Mon 9/26/11	Wed 2/1/12																		
19	Edge Repairs/Columns	80.75 days?	Mon 9/26/11	Fri 1/13/12																		
20	Floor Prep	3 days	Mon 1/16/12	Wed 1/18/12	19																	
21	Railing Install	5 days	Wed 1/25/12	Wed 2/1/12	22																	
22	DeckCoating Application	5 days	Wed 1/18/12	Wed 1/25/12	20																	
23	Phase 2 Inner (Unit 06-09)	58.69 days	Mon 11/28/11	Wed 2/15/12																		
24	Edge Repairs/Columns	45.69 days	Mon 11/28/11	Fri 1/27/12																		
25	Floor Prep	3 days	Mon 1/30/12	Wed 2/1/12	24																	
26	Railing Install	5 days	Wed 2/8/12	Wed 2/15/12	27																	
27	DeckCoating Application	5 days	Wed 2/1/12	Wed 2/8/12	25																	
28	Phase 3 Inner (Unit 01-05)	63 days	Mon 1/30/12	Fri 4/27/12																		
29	Edge Repairs/Columns	50 days	Mon 1/30/12	Wed 4/4/12																		
30	Floor Prep	3 days	Wed 4/4/12	Mon 4/9/12	29																	
31	Railing Install	5 days	Fri 4/20/12	Fri 4/27/12	32																	
32	DeckCoating Application	5 days	Mon 4/9/12	Fri 4/20/12	30																	
33	Phase 1 Outer (Unit 09-12)	98.75 days?	Mon 9/26/11	Tue 2/7/12																		
34	Edge Repairs/Columns	80.75 days?	Mon 9/26/11	Fri 1/13/12																		
35	Floor Prep	3 days	Mon 1/16/12	Wed 1/18/12	19																	
36	Railing Install	5 days	Wed 2/1/12	Tue 2/7/12	21																	
37	DeckCoating Application	5 days	Wed 1/18/12	Wed 1/25/12	35																	
38	Phase 2 Outer (Unit 06-09)	58.69 days	Mon 11/28/11	Wed 2/15/12																		
39	Edge Repairs/Columns	51 days	Mon 11/28/11	Fri 2/3/12																		
40	Floor Prep	3 days	Mon 1/30/12	Wed 2/1/12	24																	
41	Railing Install	5 days	Wed 2/8/12	Wed 2/15/12	42																	
42	DeckCoating Application	5 days	Wed 2/1/12	Wed 2/8/12	40																	
43	Phase 3 Outer (Unit 01-05)	68 days	Mon 1/30/12	Fri 5/4/12																		
44	Edge Repairs/Columns	50 days	Mon 1/30/12	Wed 4/4/12																		
45	Floor Prep	3 days	Mon 4/9/12	Wed 4/18/12	30																	
46	Railing Install	5 days	Fri 4/27/12	Fri 5/4/12	47																	
47	DeckCoating Application	5 days	Fri 4/20/12	Fri 4/27/12	32																	
48	Garage	94.94 days?	Thu 10/13/11	Tue 2/21/12																		
49	Garage Vacated (Remove Insulation)	22.31 days?	Thu 10/13/11	Thu 11/10/11																		
50	(Concrete Repairs) Partial Parking Probably Won't Happen	64.81 days?	Mon 10/17/11	Fri 1/13/12																		
51	Garage Vacated (New Insulation & Fire-Stopping)	14 days	Mon 1/16/12	Thu 2/2/12	50																	
52	Garage Vacated (Paint)	14 days	Thu 2/2/12	Tue 2/21/12	51																	
53	Balconies	112.63 days?	Mon 10/24/11	Fri 3/23/12																		
54	Phase 1 (Unit 09-12)	26.56 days?	Mon 2/20/12	Fri 3/23/12	55																	
55	Phase 2 (Unit 06-09)	21.25 days?	Mon 1/23/12	Fri 2/17/12	58																	
56	Phase 3 (Unit 01-05)	76.81 days?	Mon 10/24/11	Tue 2/7/12																		
57	Demo/Edge & Ceiling Repairs	64.81 days?	Mon 10/24/11	Fri 1/20/12																		
58	Repairs Under Carpets	29.75 days	Mon 12/12/11	Fri 1/20/12																		
59	Coatings	5 days	Mon 1/23/12	Fri 1/27/12	57																	
60	Carpet	5 days	Tue 1/31/12	Tue 2/7/12	59FS+2 days																	

Project: 62434 - Ocean Club - Schedu
Date: Thu 1/5/12

Task
Split



Progress
Milestone



Summary
Project Summary

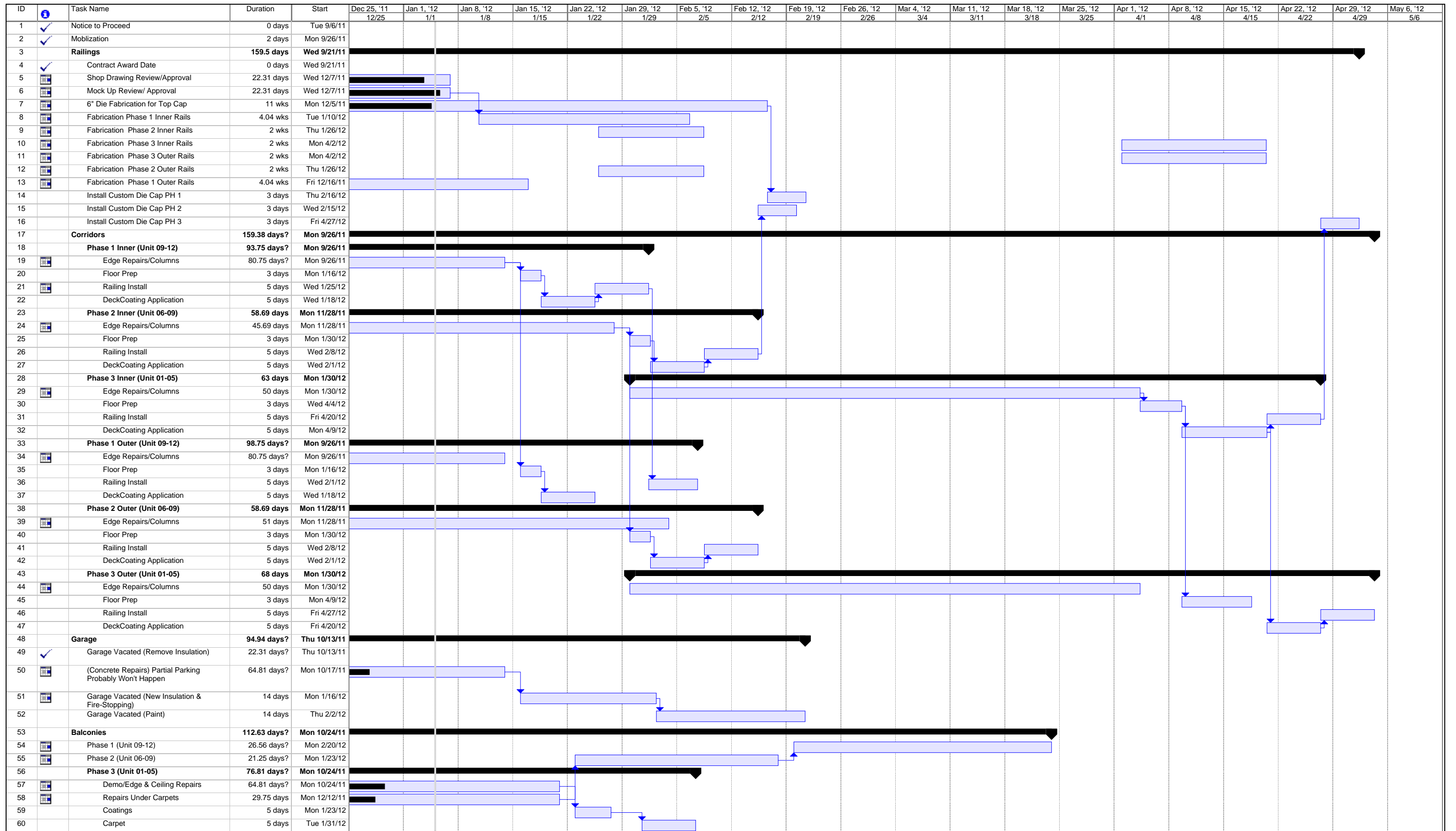


External Tasks
External Milestone



Deadline





Project: 62434 - Ocean Club - Schedu
Date: Thu 1/5/12

Task Progress Summary External Tasks Deadline Split Milestone Project Summary External Milestone